



Precision Plumbing Products

“Specify with Confidence - Install with Pride”

LEAD FREE

CPO-500 PRESSURE DROP ACTIVATED TRAP PRIMER SUBMITTAL

www.pppinc.net

The CPO-500 Dual Flow™ automatic pressure drop activated trap primer valve will prime up to 4 floor drains with our patented distribution units, the DU-U or DU-4.

This valve requires no adjustments.

System operating range is 20 psi minimum to 80 psi (138 to 552 kpa) maximum.

The valve requires a 10 psi (70 kpa) pressure drop across the valve to activate and will deliver a metered amount of water to the floor drain. This trap primer is to connect to a cold water supply line only.

Constructed of type K copper body, Sarlink 4145B diaphragm, #60 stainless steel mesh screen.



PART NO: CPO-500

PROJECT SUBMITTAL MODEL # _____

Project: _____

Contractor: _____

Engineer: _____

Date Submitted: _____

Prepared By: _____

INSTALLATION REQUIREMENTS

This valve is designed to be installed on 1/2" to 1 1/2" cold water line, feeding a flush valve or other open and closing valve supply line that is frequently used.

Trap Primer valve makeup line to floor drain is recommended to be a minimum of 12" off the finished floor before a 90° elbow can be installed.

The furthest recommended distance of makeup line is 20' to the floor drain.

Trap primer make up line must have continuous slope to the floor drain (consult local code requirements).

Install with a shut off valve for servicing on the inlet side and a union connection on the outlet side.

The valve must be installed level.

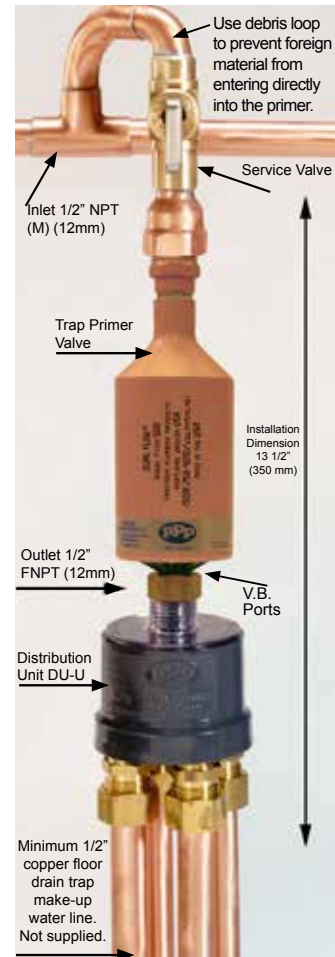
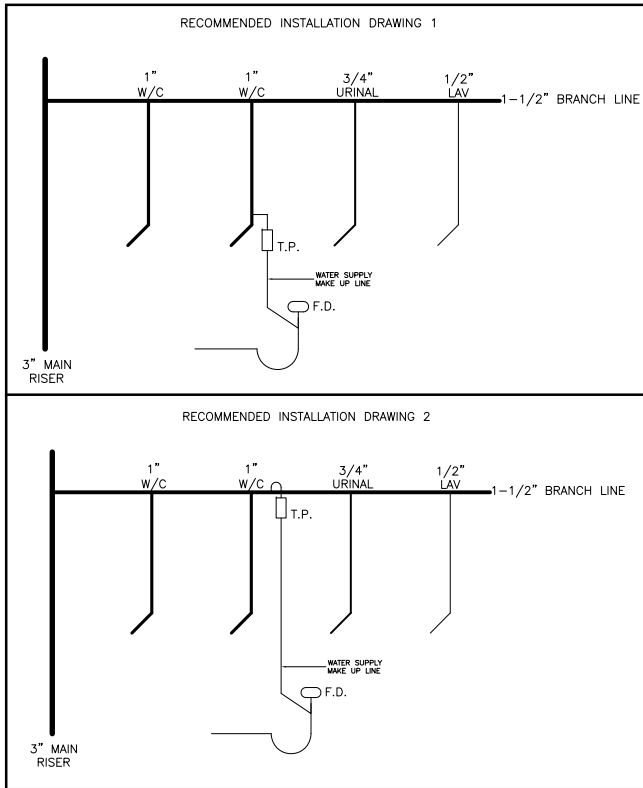
If using the distribution unit, the clear plastic cover must be used.

Do not subject the valve to rough in pressure test.

NOTE: Consult plumbing inspector prior to installing distribution units.

FLOOR DRAIN TRAP PRIMER DIST. CHART

# of Drains	Supply Tube	Dist. Units
1	N/A	N/A
2	N/A	DU-4/DU-U
3	N/A	DU-4/DU-U
4	N/A	DU-4/DU-U
Max. Water delivery based upon pressure drop and fixture unit activity on the system.		
Primer Model: CPO-500 DUAL FLOW		



Precision Plumbing Products

Division of JL Industries, Inc.

802 SE 199th Avenue
Portland, Oregon 97233

T (503) 256-4010

F (503) 253-8165

www.pppinc.net



LOW LEAD



Complies with Low Lead Law

