



**Precision Plumbing Products**

*"Specify with Confidence - Install with Pride"*

**LEAD FREE**

**PO-500 PRESSURE DROP ACTIVATED TRAP PRIMER SUBMITTAL**

www.pppinc.net

The PO-500 Oregon #1 automatic pressure drop activated trap primer valve will prime up to 4 floors drains with our patented distribution DU-U unit.

This valve requires no adjustment and will compensate for pressure fluctuations without going out of adjustment with automatic activation.

System operating range is 20 psi minimum to 80 psi (138 to 552 kpa) maximum.

The valve requires a 10 psi (70 kpa) pressure drop across the valve to activate and will deliver a metered amount of water to the floor drain. Trap primer is to be connect to a cold water supply only.

Constructed Composite body, Sarlink 4145B diaphragm, #60 stainless steel mesh screen.

PROJECT SUBMITTAL MODEL # \_\_\_\_\_

Project: \_\_\_\_\_

Contractor: \_\_\_\_\_

Engineer: \_\_\_\_\_

Date Submitted: \_\_\_\_\_

Prepared By: \_\_\_\_\_

**NO Adjustment Required!**

PART NO: PO-500



- "OREGON #1"**  
 Floor Drain Trap Primer Valve Components  
**SPECIFICATIONS**  
 Body, Check Valve Retainer Plate,  
 Float (Polypropylene), cover  
 Material Specification  
 Geon PVC M-1000 Type 1, Grade 1 molding  
 compound. NSF listed material #270  
 Check Valve Ball  
 #316 - Stainless Steel  
 Check Valve Ball Retainer  
 Monel Metal  
 Cover Screws (6)  
 5/8" x 10/24" Stainless Steel  
 Slip Joint Nut - 1/2" NPT  
 Chrome Plated Brass  
 Slip Joint Nut Washer - Neoprene Strainer  
 40 Mesh - Stainless Steel Wire Cloth

**INSTALLATION REQUIREMENTS**

This valve is designed to be installed on 1/2" to 1 1/2" cold water line, feeding a flush valve or other open and closing valve supply line that is frequently used.

Trap Primer valve makeup line to floor drain is recommended to be a minimum of 12" off the finished floor before a 90° elbow can be installed.

The furthest recommended distance of makeup line is 20' to the floor drain.

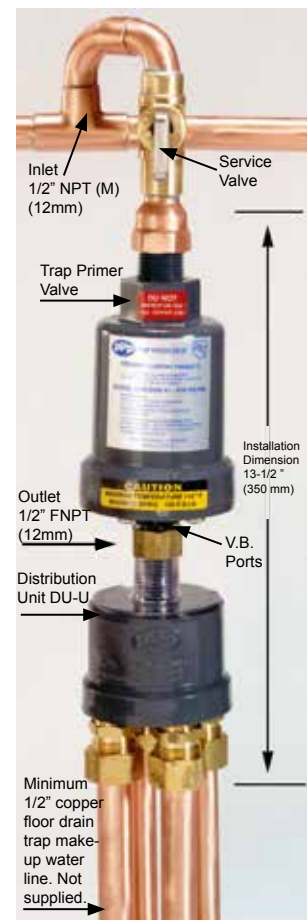
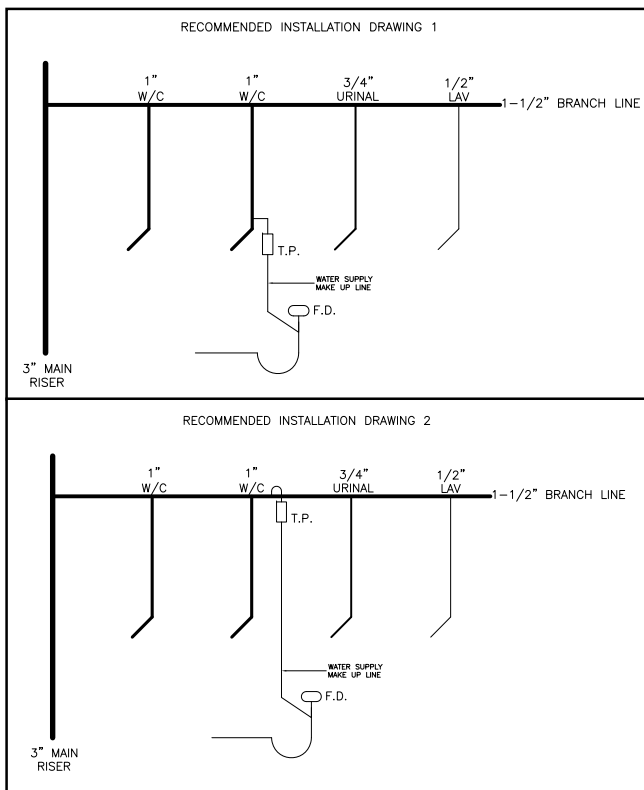
Trap primer make up line must have continuous slope to the floor drain (consult local code requirements).

Install with a shut off valve for servicing on the inlet side and a union connection on the outlet side.

The valve must be installed level.

If using the distribution unit the clear plastic cover must be used.

Do not subject the valve to rough in pressure test.



NOTE: Consult plumbing inspector prior to installing distribution units.

**Precision Plumbing Products**

Division of JL Industries, Inc.

802 SE 199th Ave  
Portland, Oregon 97233

T (503) 256-4010  
F (503) 253-8165

www.pppinc.net



JL Industries, Inc.

