



## Precision Plumbing Products

*"Specify with Confidence - Install with Pride"*

### INSTALLATION SHEET FOR THE WALKER PRIMER P/N WCP-1

www.pppinc.net

**Step 1:**

Remove the right side close coupled tank bolt.

**Step 2:**

Fasten the Walker Priming Tube by placing the 3/8" diameter threaded rod through the pre-drilled bolt hole. Locate the offset priming tube to clear the float rod and tank float. Caution: American Standard tanks must be drilled out to a 3/8" diameter bolt hole using a 3/8" masonry bit.

**Step 3:**

Make a water tight connection with washers and bolt provided.

Caution: Do not over tighten the pre-drilled threaded rod.

**Step 4:**

Make the 5/8" OD copper trap priming line connection with the compression fitting provided.

**Step 5:**

Remove the existing refill tube from the over flow tube.

**Step 6:**

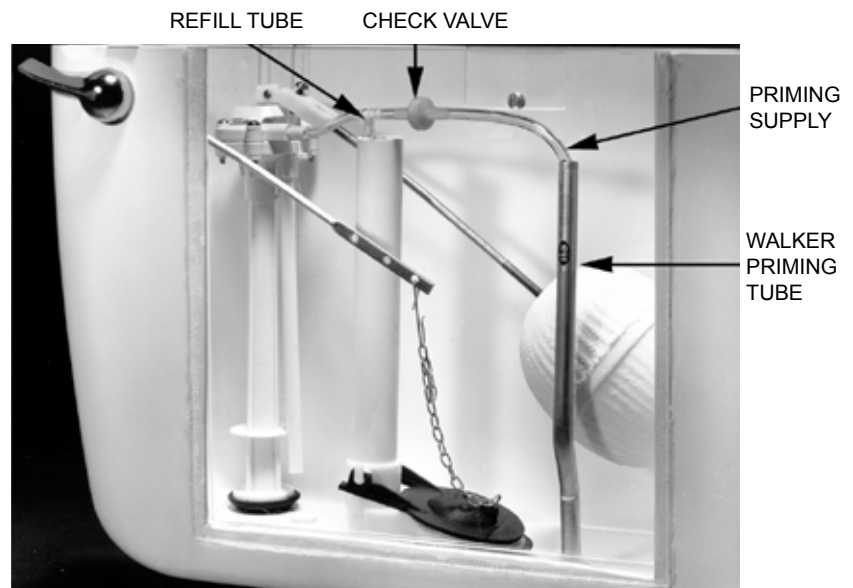
Attach the end of the refill tube provided in the Walker Priming Kit to the ball cock assembly.

**Step 7:**

Place the tube on the lower side of the tee into the overflow tube.

**Step 8:**

The remaining tube marked with the label "To Priming Tube", the In-Line check valve, and flow regulator should be placed directly into the Walker Priming Tube.



An average discharge rate of 2 oz.  
at 20 psi with a flow rate of 8 psi  
over a 60 second period of time.

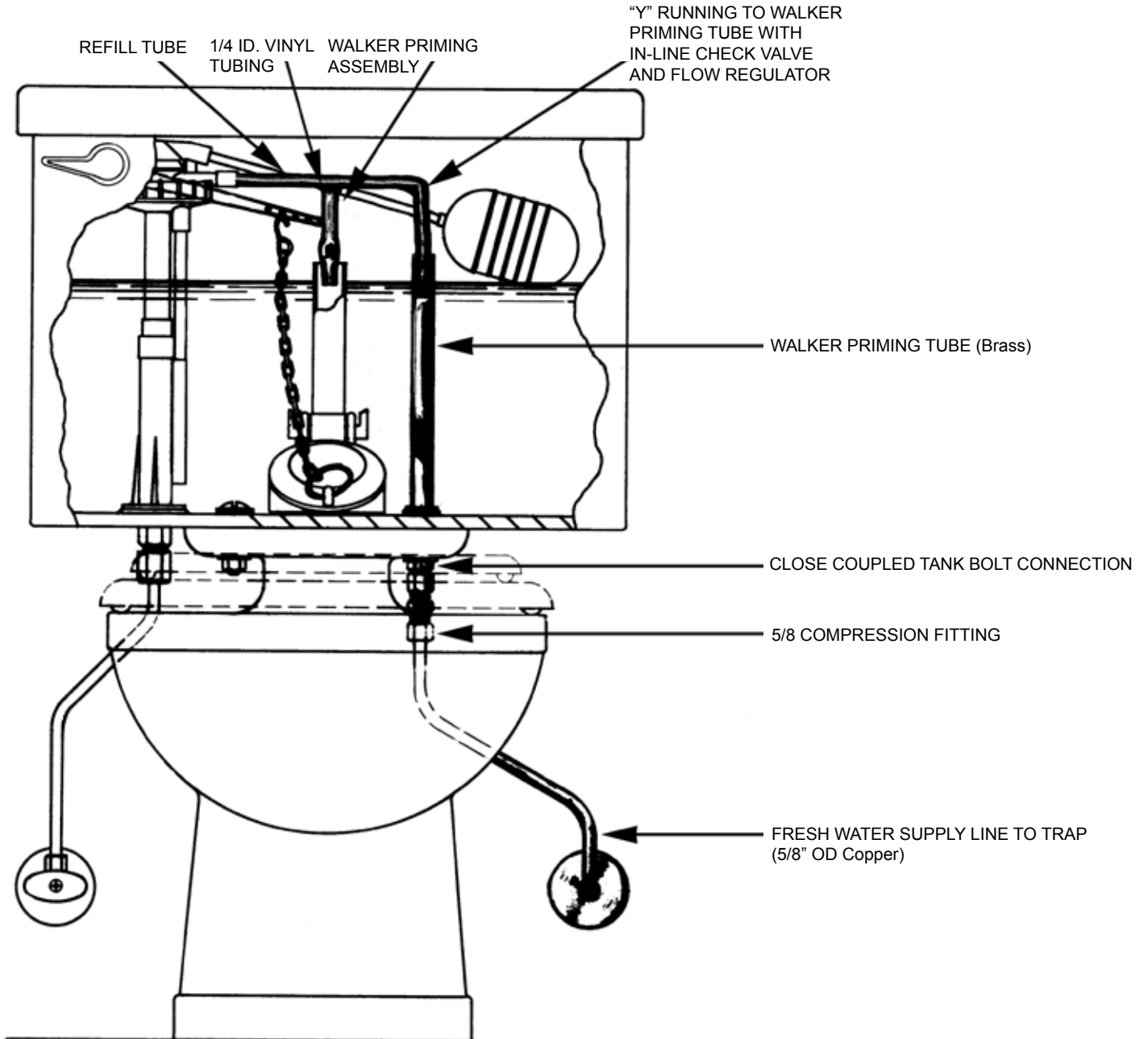
**Caution:**

For proper installation...

All water flowing from the refill tube to the priming tube must run through the In-Line check valve. Failure to follow these instructions make null and void any product warranty.



WALKER PRIMER



JL Industries, inc.

**Precision Plumbing Products**

Division of JL Industries, Inc.

802 SE 199th Ave  
Portland, Oregon 97233

T (503) 256-4010  
F (503) 253-8165

www.pppinc.net