



Precision Plumbing Products

"Specify with Confidence - Install with Pride"

INSTALLATION SHEET FOR THE WALKER PRIMER P/N WCP-1

www.pppinc.net

Step 1:

Remove the right side close coupled tank bolt.

Step 2:

Fasten the Walker Priming Tube by placing the 3/8" diameter threaded rod through the pre-drilled bolt hole. Locate the offset priming tube to clear the float rod and tank float. Caution: American Standard tanks must be drilled out to a 3/8" diameter bolt hole using a 3/8" masonry bit.

Step 3:

Make a water tight connection with washers and bolt provided.

Caution: Do not over tighten the pre-drilled threaded rod.

Step 4:

Make the 1/2" OD copper trap priming line connection with the compression fitting provided.

Step 5:

Remove the existing refill tube from the over flow tube.

Step 6:

Attach the end of the refill tube provided in the Walker Priming Kit to the ball cock assembly.

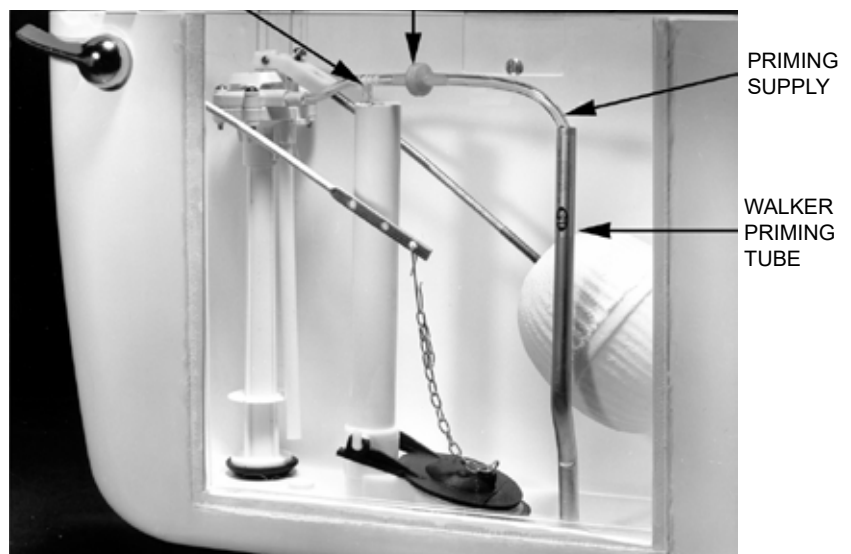
Step 7:

Place the tube on the lower side of the tee into the overflow tube.

Step 8:

The remaining tube marked with the label "To Priming Tube", the In-Line check valve, and flow regulator should be placed directly into the Walker Priming Tube.

REFILL TUBE CHECK VALVE



An average discharge rate of 2 oz. at 20 psi with a flow rate of 8 psi over a 60 second period of time.

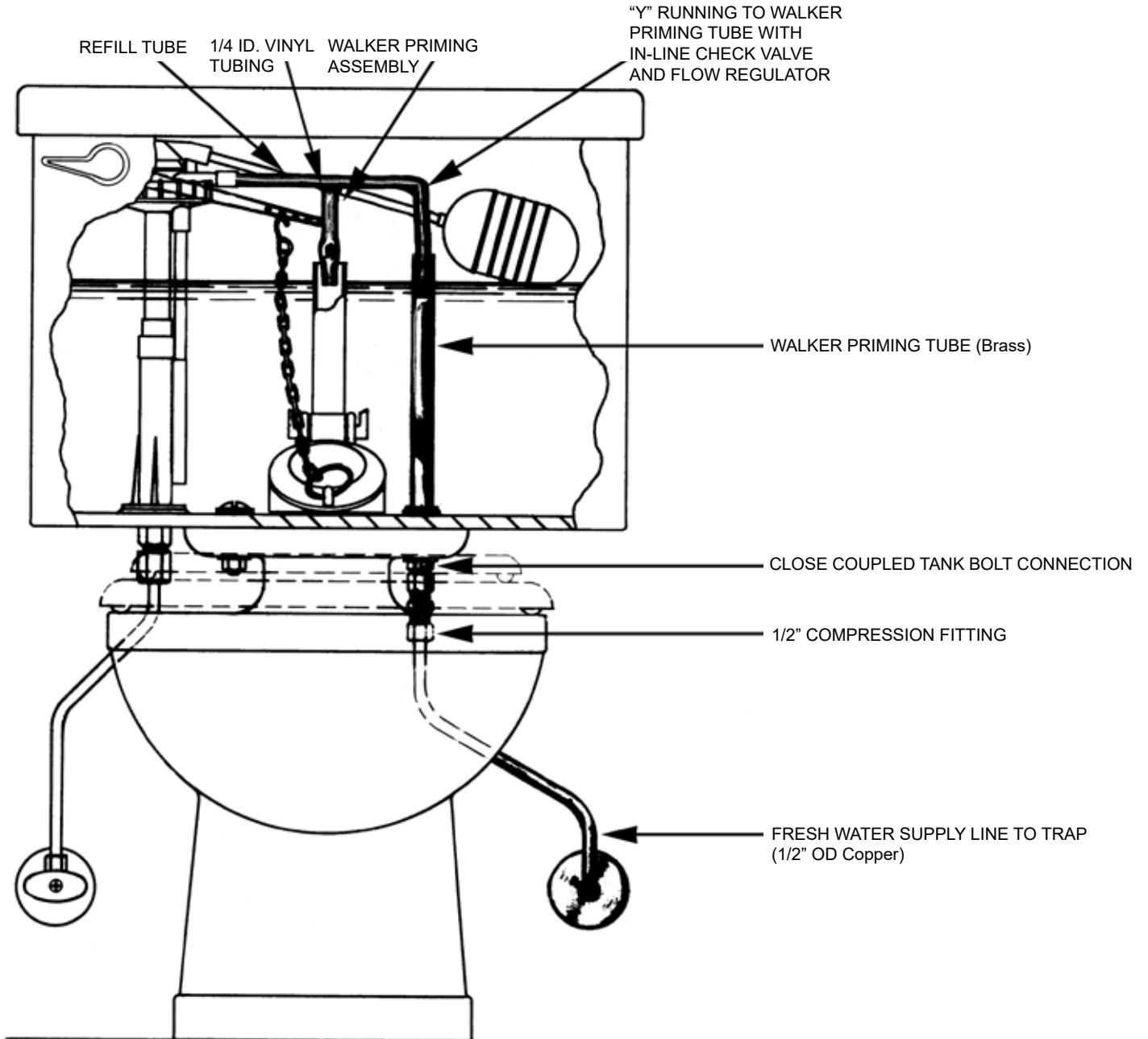
Caution:

For proper installation...

All water flowing from the refill tube to the priming tube must run through the In-Line check valve. Failure to follow these instructions make null and void any product warranty.



WALKER PRIMER



Precision Plumbing Products

Division of JL Industries, Inc.

802 SE 199th Ave
Portland, Oregon 97233

T (503) 256-4010
F (503) 253-8165

www.pppinc.net